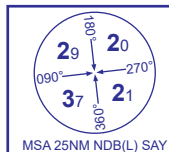


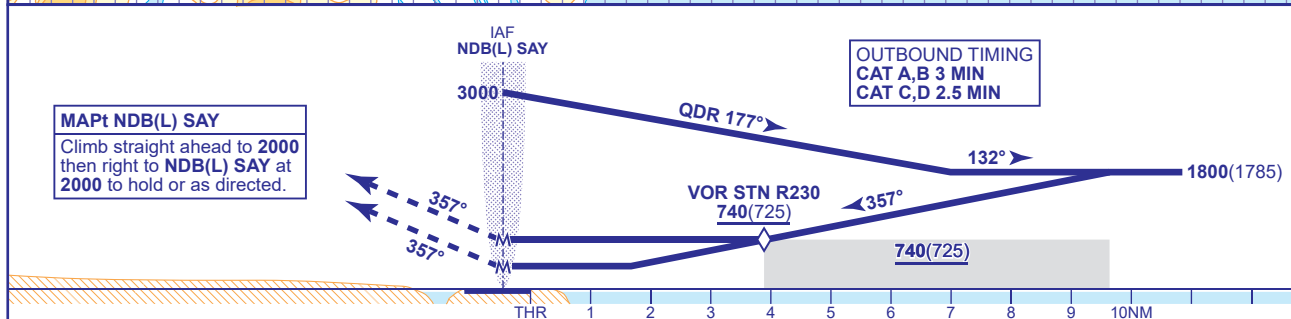
STORNOWAY

NDB(L)
RWY 36
(ACFT CAT A,B,C,D)



APP	119.480	STORNOWAY APPROACH	AD ELEVATION	26
TWR	119.480	STORNOWAY TOWER	THR ELEVATION	15
AFIS	119.480	STORNOWAY INFORMATION	OBSTACLE ELEVATION	
ATIS	115.100	STORNOWAY INFORMATION	1233 AMSL (1218) (ABOVE THR)	
			BEARINGS ARE MAGNETIC	

TRANSITION ALTITUDE	3000
---------------------	------



Aircraft Category		A	B	C	D	Rate of descent	G/S KT	160	140	120	100	80
OCA (OCH)	NO DME	740(725)	740(725)	740(725)	740(725)		FT/MIN	850	750	640	530	430
	WITH STN	400(385)	400(385)	400(385)	400(385)							
VM(C)OCA (OCH AAL)	Total Area	760(734)	760(734)	860(834)	1060(1034)							
	East of RWY 18/36	760(734)	760(734)	760(734)	770(744)							

AIRCRAFT ABLE TO RECEIVE VOR STN
Aircraft able to receive VOR STN may continue to lower MDH after passing VOR STN step-down R230 inbound.

NOTE 1 Lowest altitude to commence procedure from hold is **2000**.
2 Direct arrivals are detailed on AD 2-EGPO-8-10.

CHANGE (6/25): VM(C)OCA(OCH AAL) TOTAL AREA CAT A/B, EAST OF RWY 18/36 CAT A/B/C.